

# Vocabulary



## Word Meaning

V. 019

### Word Web



#### Objective

The student will identify the multiple meanings of words.



#### Materials

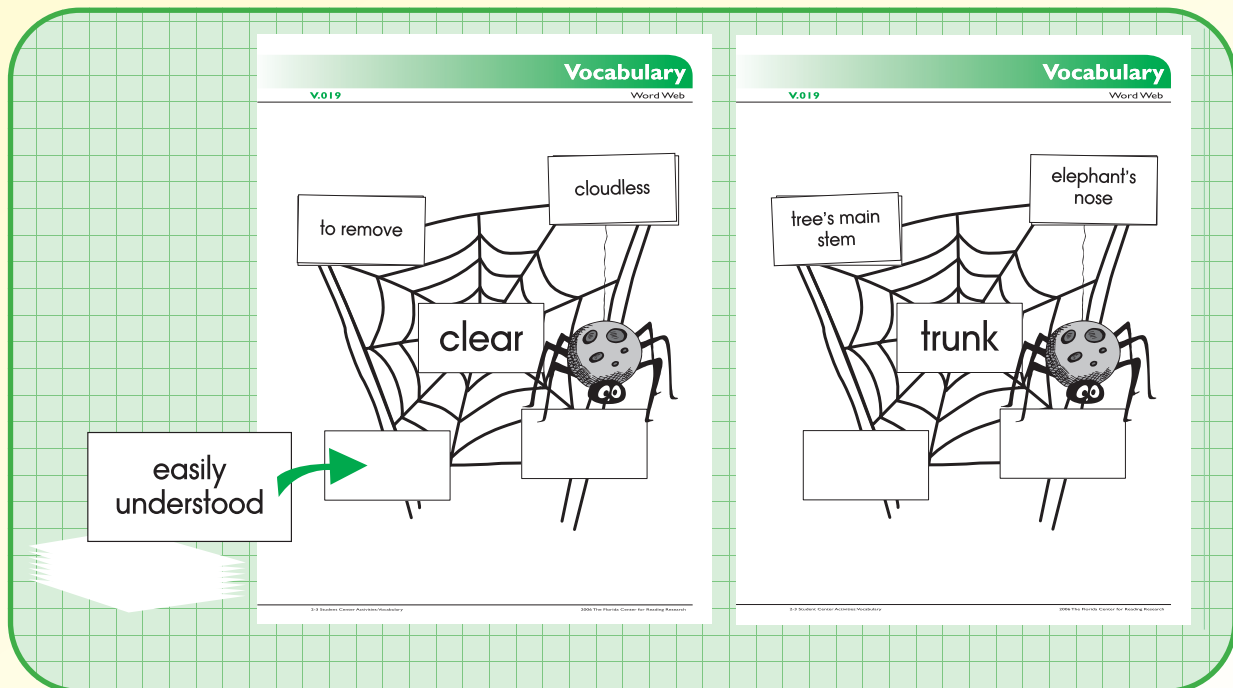
- ▶ Word Web work boards  
*Copy on card stock, laminate, and cut.*
- ▶ Word cards
- ▶ Reference materials (e.g., dictionary, thesaurus, text)
- ▶ Student sheet
- ▶ Pencil



#### Activity

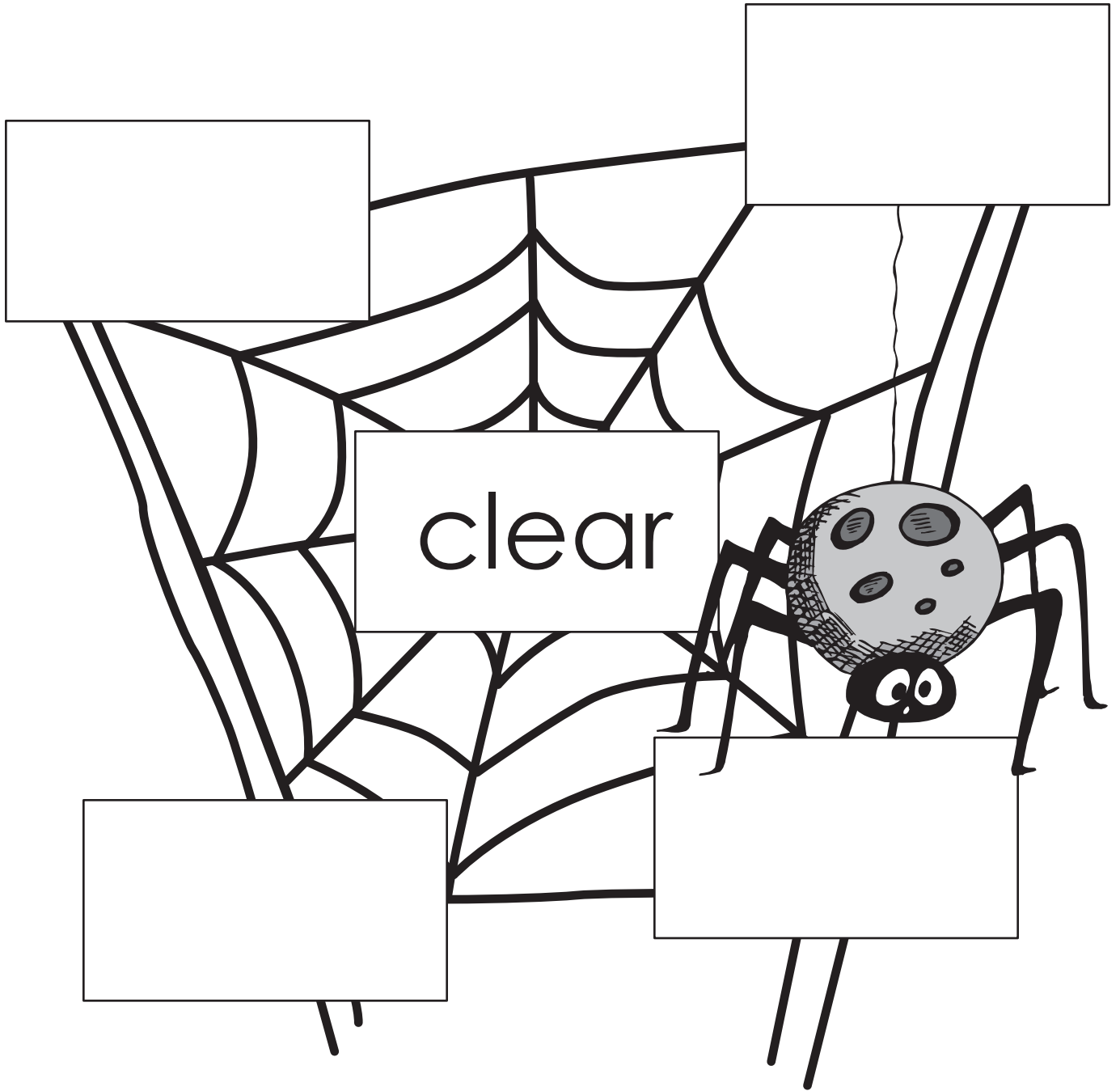
Students identify multiple meanings for a word by constructing a web.

1. Place the four Word Web work boards at the center. Place the word cards face down in a stack. Provide each student with a student sheet.
2. Student reads each target word in the middle of each Word Web board.
3. Selects a word card from the stack, reads, and determines meaning. Places in a box on the work board of the corresponding target word. Uses dictionary, if necessary.
4. Completes all four boards.
5. Records information on the student sheet.
6. Chooses one word and writes sentences to demonstrate each meaning of the word.
7. Teacher evaluation



#### Extensions and Adaptations

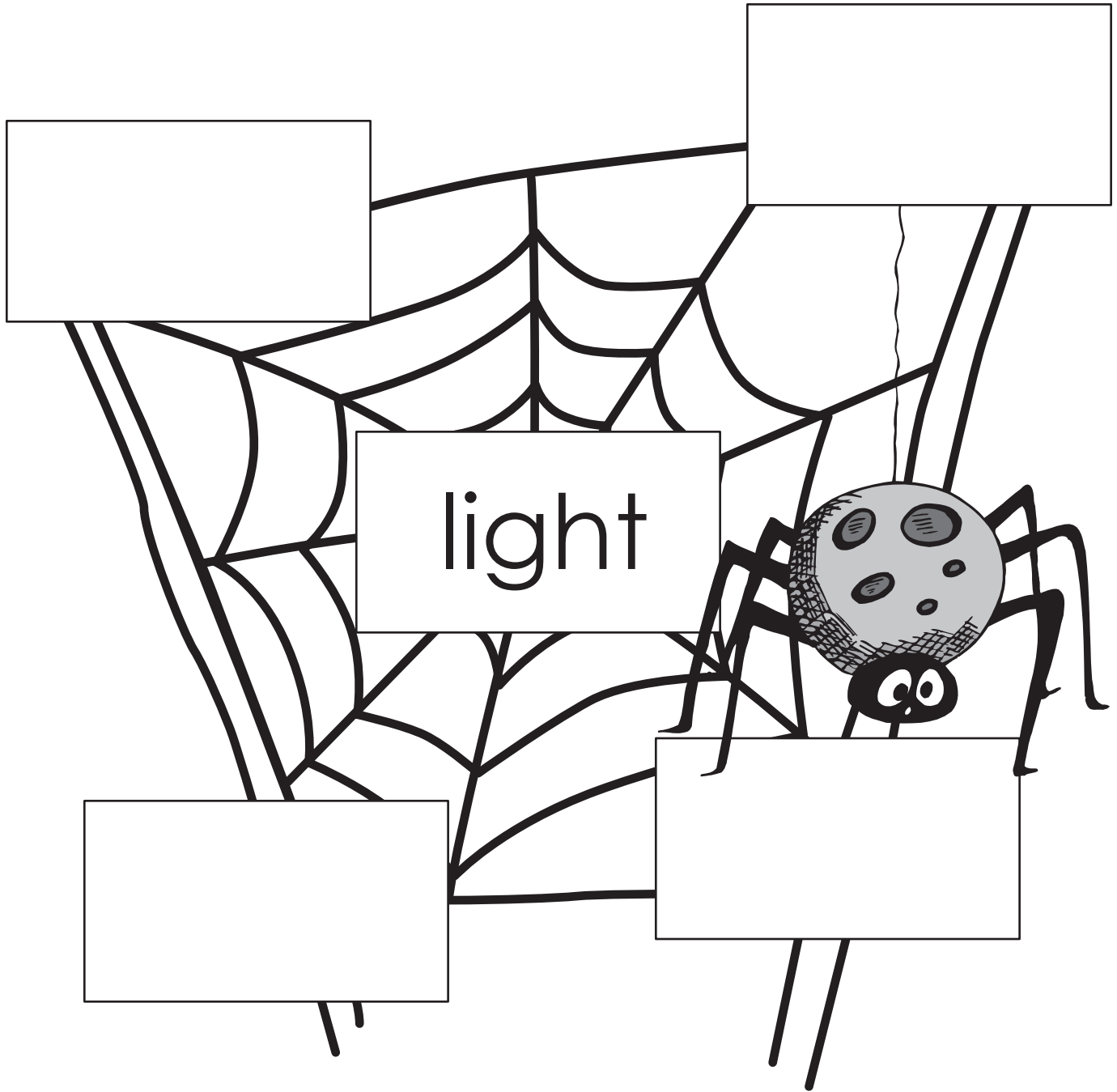
- ▶ Use other target words and write multiple meanings.

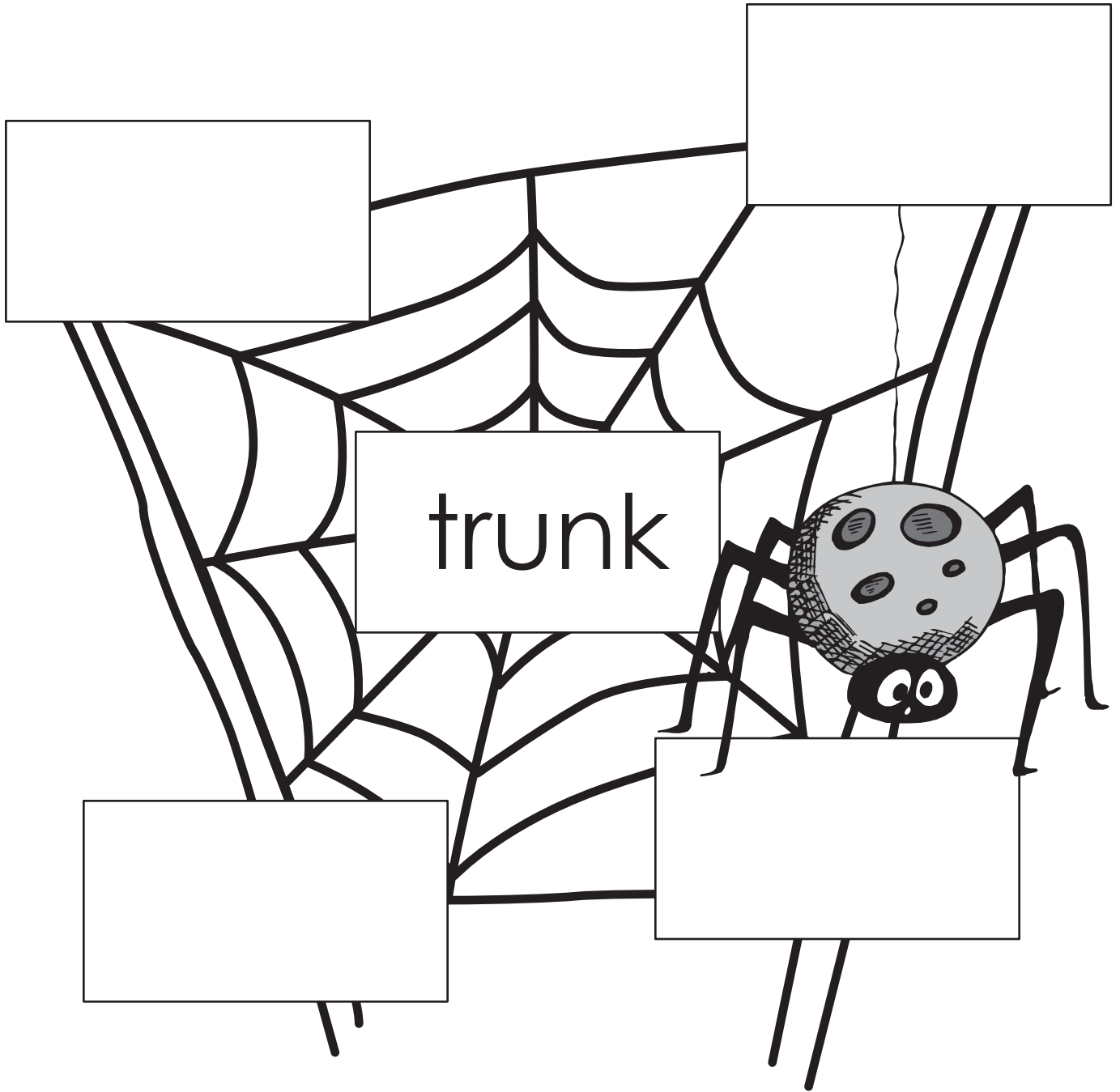


# Vocabulary

Word Web

V. 019

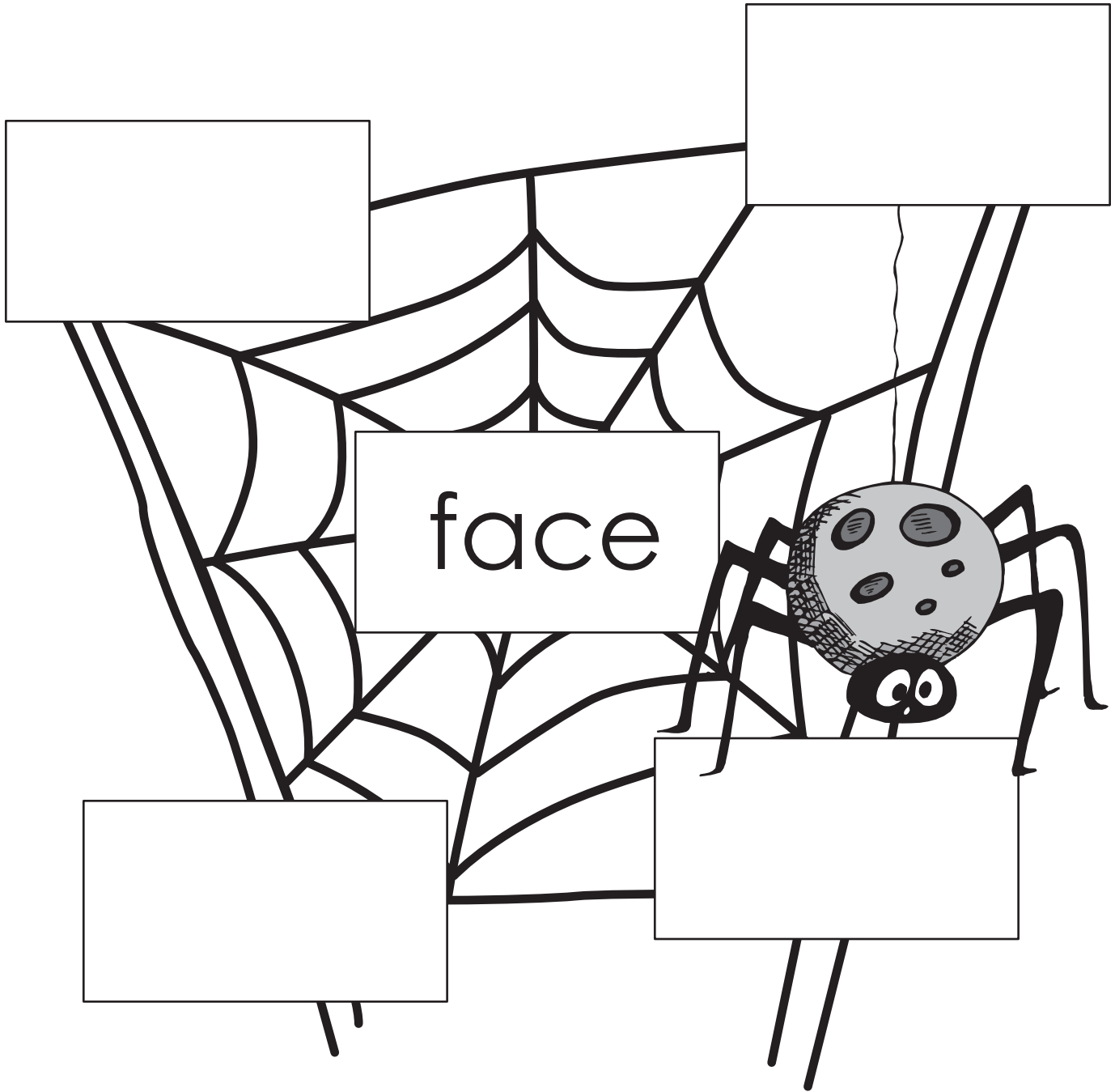




# Vocabulary

Word Web

V. 019



# Vocabulary

V. 019

Word Web

easily understood	to remove	go by without touching
cloudless	gentle	traffic signal
not dark	not heavy	turn toward
part of the head	to have to deal with something	side of a mountain
elephant's nose	car storage compartment	tree's main stem
upper body		

clear - easily understood, to remove, go by without touching, cloudless

light - traffic signal, not dark, not heavy, gentle

face - turn toward, part of the head, to have to deal with something, side of a mountain

trunk - elephant's nose, car storage compartment, tree's main stem, upper body

# Name \_\_\_\_\_

Word Web

V. 019

face

trunk

light

clear

1.

2.

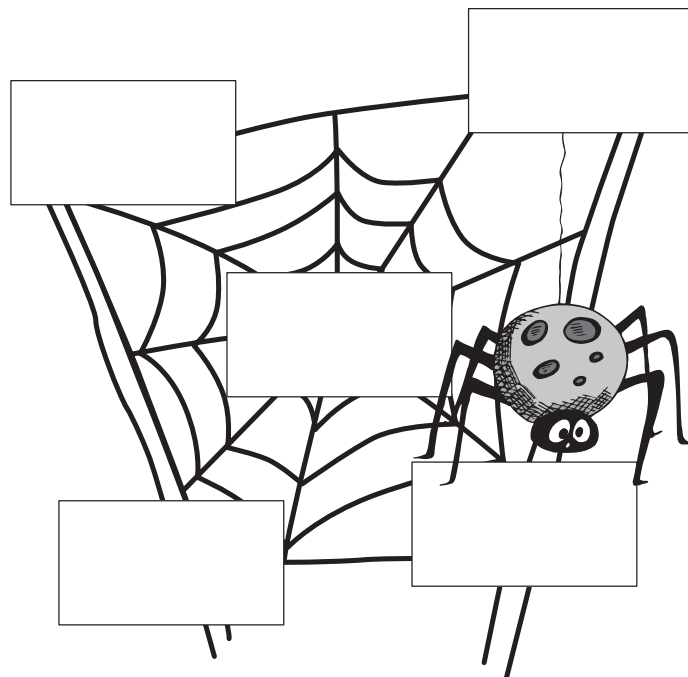
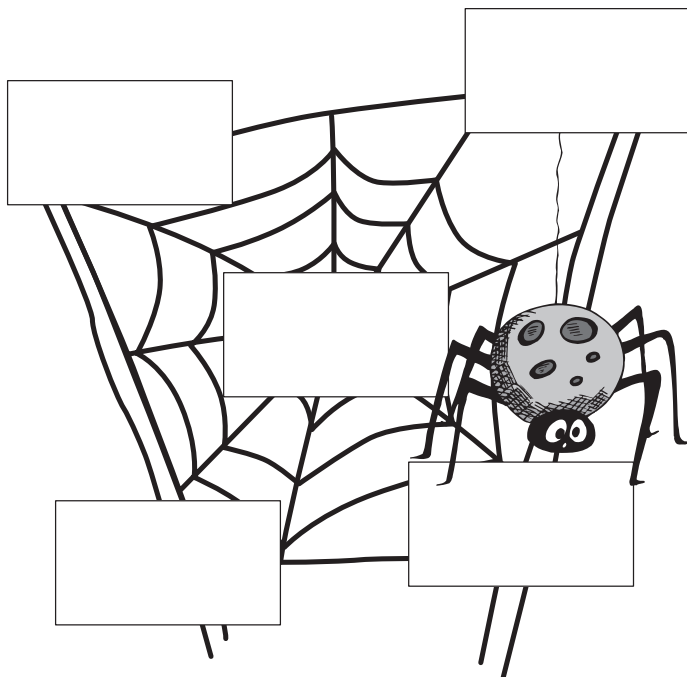
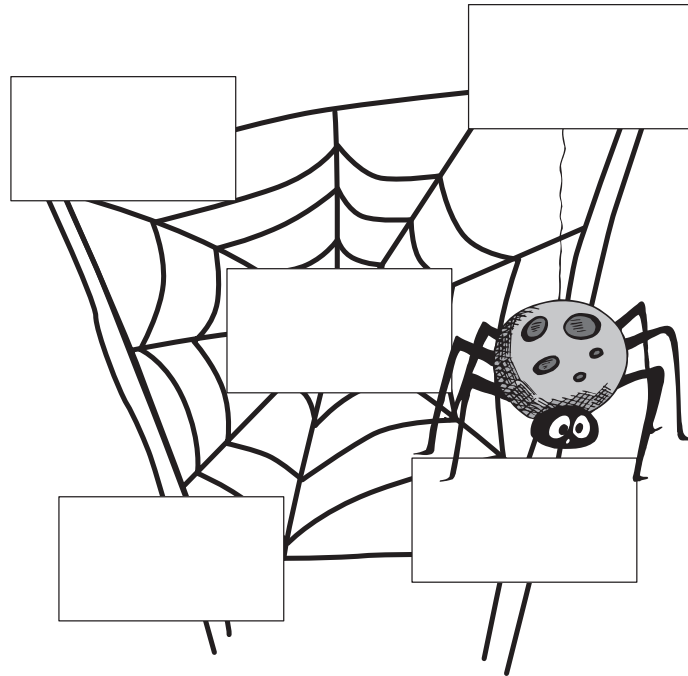
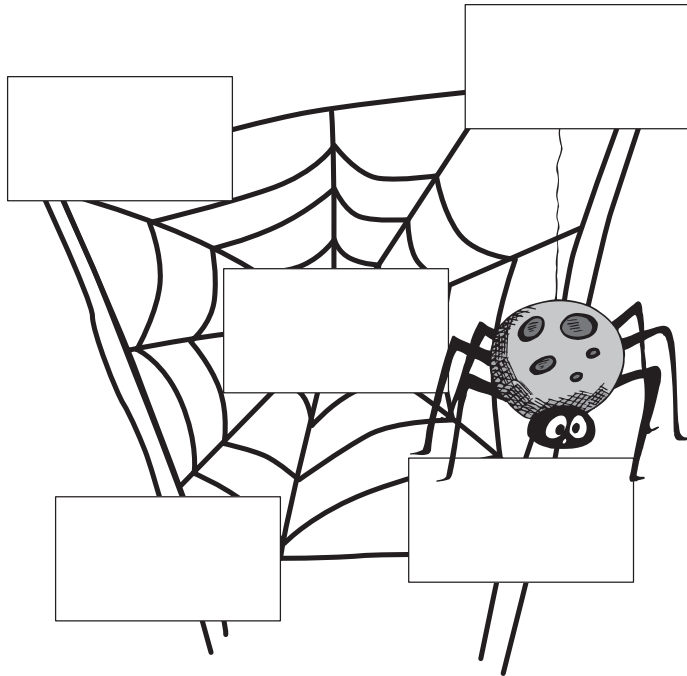
3.

4.

Name \_\_\_\_\_

V. 019

Word Web





# Name \_\_\_\_\_

Word Web

V. 019

	1.	2.	3.	4.