



FLORIDA CENTER FOR
READING RESEARCH



FLORIDA STATE UNIVERSITY
COLLEGE OF EDUCATION,
HEALTH, AND HUMAN SCIENCES

**FSU Curriculum and Instruction
Reading Education or Special
Education doctoral program
&
Project TRANSLATE
Information Session**

Wednesday, October 30, 2024
7:00pm EST



FLORIDA CENTER FOR
READING RESEARCH

Welcome & Introductions!

Thank you for your interest in the Curriculum and Instruction - *Reading Education* or *Special Education* doctoral program at Florida State University.

We have funding available through Project TRANSLATE, which will fund 5 doctoral students to begin in Fall 2025.

Important Information to Know about the FSU Ph.D. program:

Our **Ph.D. program is in Curriculum and Instruction** and is housed in the School of Teacher Education in the College of Education, Health, and Human Sciences.

- See this website: <https://registrar.fsu.edu/bulletin/graduate-departments/teacher-education> (see “Doctoral Degree in Curriculum and Instruction”)

This is a 4-year, in-person PhD program. It is required that you reside in Tallahassee, FL for your program.

Should you receive funding through Project TRANSLATE, your tuition and a stipend are paid. You will also receive funds for books, supplies, conference travel, etc. It is expected that you do not have outside employment during your program.

A few key things to note:

1. Our priority **deadline is December 1** to be considered for funding (please be in touch if you cannot get all the pieces in by that time due to GRE or transcripts.)
2. GRE test scores are required (within 5 years) but can be waived by request.
3. Official transcripts are required.
4. **Your statement of purpose is very important.**
 - a) We want to better understand why you want to pursue your PhD and which faculty member(s) may be a good fit for you (see list of faculty below).

Faculty Associated with Project TRANSLATE.

It is advisable that you reach out to the faculty member whose research best fits your interests:

- Dr. Sonia Cabell (Reading Ed.)
<https://cehhs.fsu.edu/faculty-and-staff/dr-sonia-cabell>
<https://fcrr.org/person/sonia-cabell>
- Dr. Nicole Patton Terry (Reading Ed.)
<https://cehhs.fsu.edu/faculty-and-staff/dr-nicole-patton-terry>
<https://fcrr.org/person/nicole-patton-terry-phd>
- Dr. Matt Cooper Borkenhagen (Reading Ed.)
<https://cehhs.fsu.edu/faculty-and-staff/dr-matt-cooper-borkenhagen>
<https://fcrr.org/person/matt-cooper-borkenhagen-phd>

Faculty Associated with Project TRANSLATE.

It is advisable that you reach out to the faculty member whose research best fits your interests:

- Dr. Laura Steacy (Special Ed.)
<https://cehhs.fsu.edu/laura-steacy>
<https://fcrr.org/person/laura-steacy>
- Dr. Veronica Fleury (Special Ed.)
<https://cehhs.fsu.edu/faculty-and-staff/dr-veronica-fleury>
<https://fcrr.org/person/veronica-fleury-phd>
- Dr. Jenny Root (Special Ed.)
<https://cehhs.fsu.edu/jenny-root>
<https://fcrr.org/person/jenny-root-phd-bcba>

Project TRANSLATE

- To be considered for Project TRANSLATE funding, you must be focused on studying reading specifically and you will choose one of two majors—*Reading Education* or *Special Education*.
- You can find information on **how to apply** to the Ph.D. program here: <https://cehhs.fsu.edu/reading-ed> OR <https://cehhs.fsu.edu/special-education-grad>
- Principal Investigator, [Dr. Sonia Cabell](#)
- Co-Principal Investigator, Dr. Nicole Patton Terry

What is Project TRANSLATE?

Training Scholars of Reading and Language Arts to Impact K-12 Teacher Education (TRANSLATE)

The purpose of Project TRANSLATE is to prepare the next generation of scholars with expertise in reading education (including reading disabilities) who will secure faculty positions in institutions of higher education to effectively prepare future teachers, conduct research, and provide service, leadership, and translation within the field of reading education.

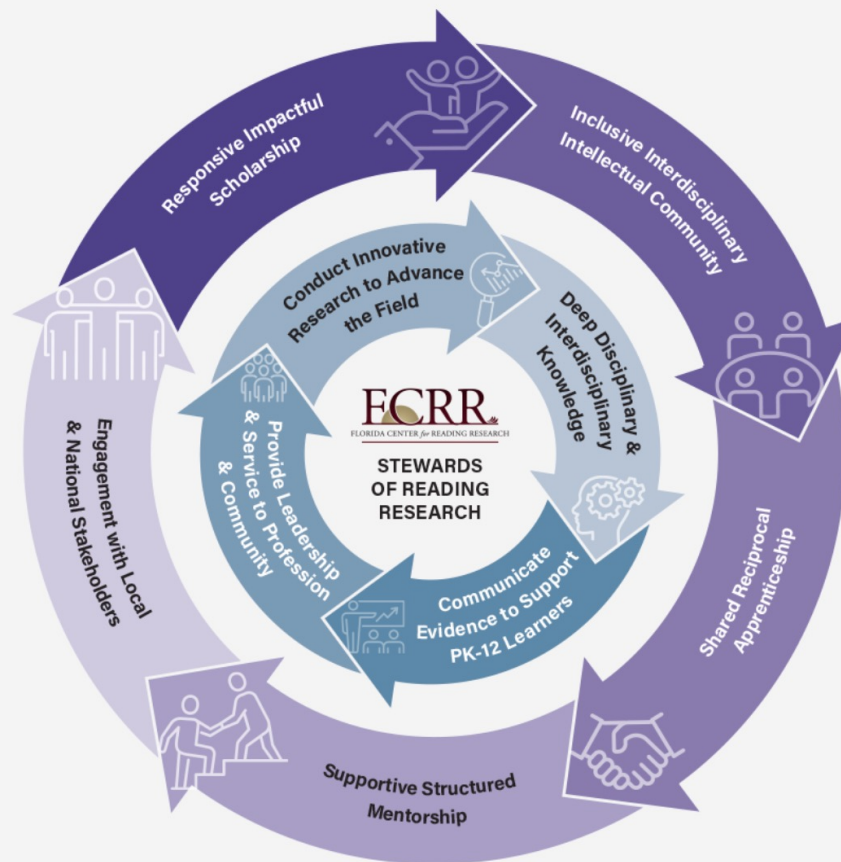
Funding source: An Anonymous Family Foundation, (\$1.2M)

As mentioned, this will fund 5 scholars focused on studying reading specifically with one of two majors—*Reading Education or Special Education*.

Why FCRR?

The Student Experience

As a university-based research center, FCRR is committed to preparing future researchers and leaders. FCRR faculty provide mentorship and training to undergraduate and graduate students across Florida State University. Through courses, research assistantships, and practice/policy apprenticeships, students become members of a large interdisciplinary intellectual community.



Created with insights from: Walker, G., Golde, C. M., Jones, L., Bueschell, A. C., & Hutchins, P. (2008). *The formation of scholars: Rethinking doctoral education for the twenty-first century*. San Francisco, CA: Jossey-Boss.

What is the Funding Package?

Stipend of up to \$34,000 per year

Up to \$12,000 per year to cover tuition and student health insurance

Up to \$3,000 per year Research, Travel, Engagement, and Development Fund

Money for a computer



FLORIDA CENTER FOR
READING RESEARCH

Q & A

Thank you for your interest!

For additional information about the program, contact
Catie Goodman

cjgoodman@fcrr.org

For application submission, contact Veronica Houck

vhouck@fsu.edu