

Phonological Awareness

PA19

Onset and Rime

Onset and Rime Picture Puzzles

Benchmarks: A.2a, F.3b, F.3d, F.2f



Objective

The child will blend onsets and rimes to make words.



Materials

- Rime Work Boards (Activity Master) - Copy on cardstock and laminate.
- Plastic letters
- Writing utensils
- Extension: Child Sheet (Activity Master)



Activity

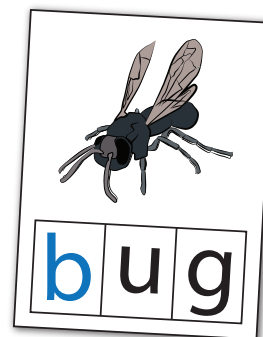
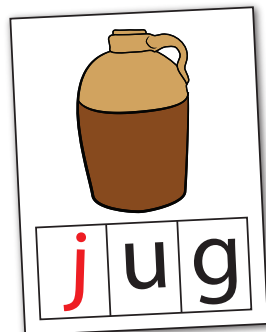
After teacher introduction, children select onsets to complete words using pictures as clues.

1. Place the Onset and Rime Work Boards face up in a stack at the center. Place the plastic letters beside the boards.
2. The child selects the top work board from the stack, names the picture, and reads the rime (e.g., “jug, ug”). Says the initial sound of the word and its corresponding letter (i.e., “/j/, j”).
3. Look for and place the matching plastic letter in the onset position on the work board.
4. Continue until all boards are complete.
5. Peer/teacher evaluation.



Adaptations and Extensions

- Make other picture cards to use in the game.
- Put out only the plastic letters that will be used with the boards.
- Use only 1 board at a time if working on specific rimes. Work as partners to complete the board.
- Come up with other onsets to make new words.
- Copy completed words onto child sheet.



t m h
r d

k m h
s w

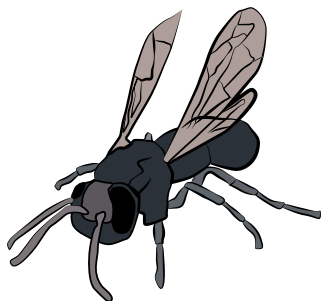
Phonological Awareness

PA19

Onset and Rime

Onset and Rime Picture Puzzles

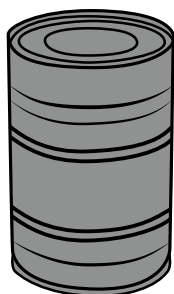
Benchmarks: A.2a, F.3b, F.3d, F.2f



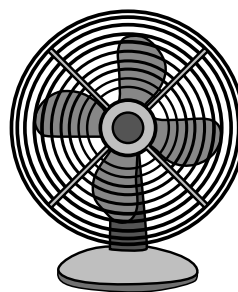
u g



u g



a n



a n

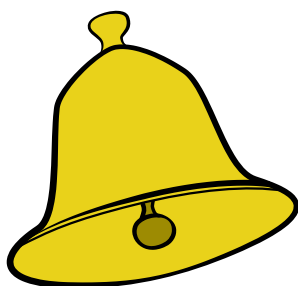
Phonological Awareness

PA19

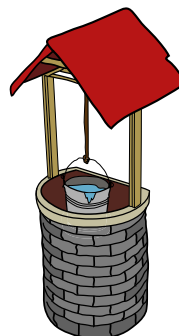
Onset and Rime

Onset and Rime Picture Puzzles

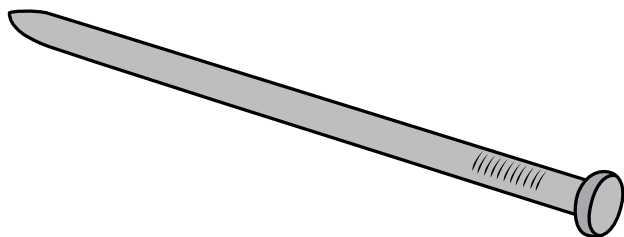
Benchmarks: A.2a, F.3b, F.3d, F.2f



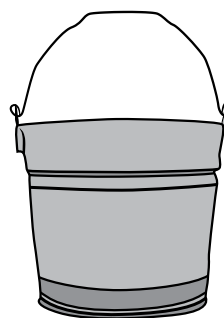
	e	l	l
--	---	---	---



	e	l	l
--	---	---	---



	a	i	l
--	---	---	---



	a	i	l
--	---	---	---

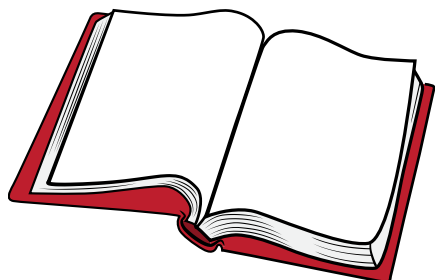
Phonological Awareness

PA19

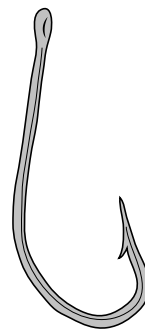
Onset and Rime

Onset and Rime Picture Puzzles

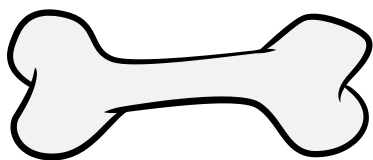
Benchmarks: A.2a, F.3b, F.3d, F.2f



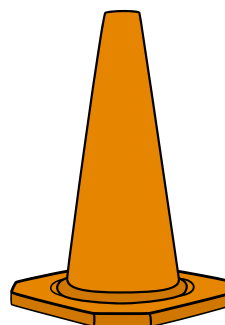
	o	o	k
--	---	---	---



	o	o	k
--	---	---	---



	o	n	e
--	---	---	---



	o	n	e
--	---	---	---