

# Phonological Awareness



## Phoneme Matching

PA. 028

Pack - A - Backpack



### Objective

The student will match initial phonemes in words.



### Materials

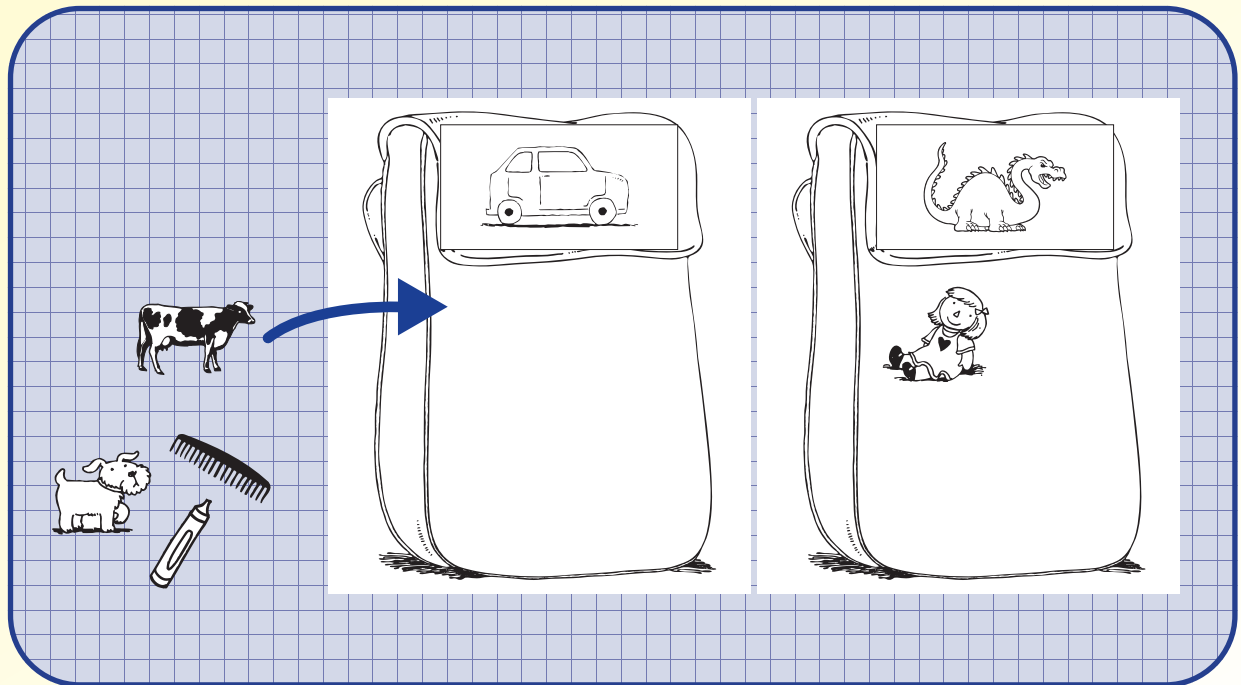
- ▶ Backpack  
*Make two copies on card stock and laminate.*
- ▶ Initial sound objects or picture cards  
*Choose one picture for each target sound and attach it to the top flap of the backpack (e.g., car, dragon).*



### Activity

Students sort objects by initial sound on the backpacks.

1. Place backpacks and initial sound objects at the center.
2. Taking turns, students select an object, name the object, and say the initial sound (e.g., “cow, /k/”).
3. Determine which target sound picture (i.e., /k/ or /d/) matches the selected object. Place object on the corresponding backpack.
4. Continue until all objects are sorted.
5. Teacher evaluation



### Extensions and Adaptations

- ▶ Add non-target sound pictures or objects.

# Phonological Awareness

PA. 028

Pack - A - Backpack

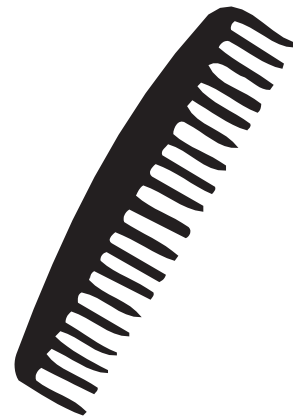
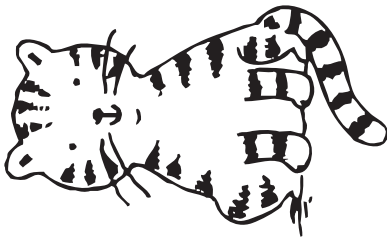
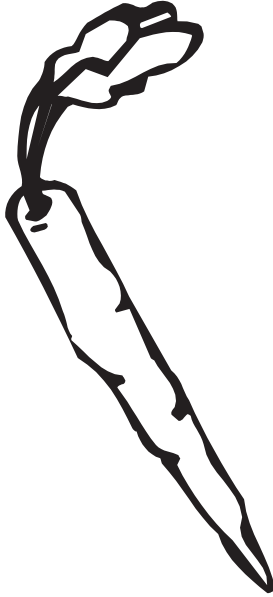
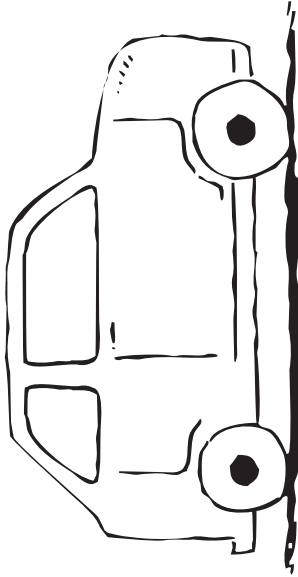


backpack

# Phonological Awareness

Pack - A - Backpack

PA. 028



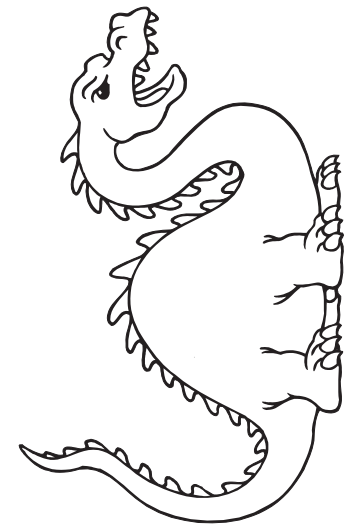
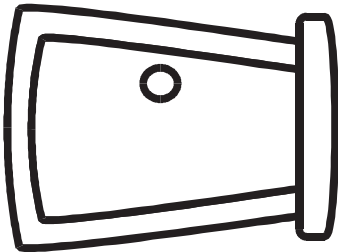
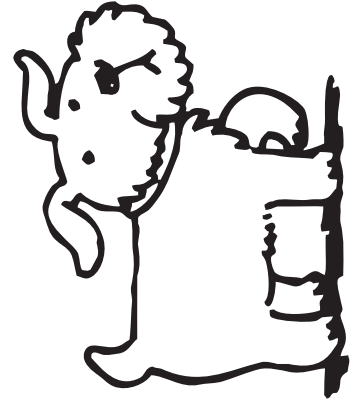
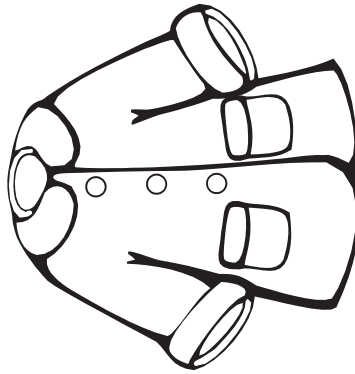
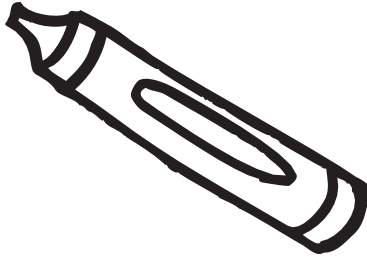
initial sound picture cards: car, carrot, cloud, cat, cow, comb



# Phonological Awareness

PA. 028

Pack - A - Backpack



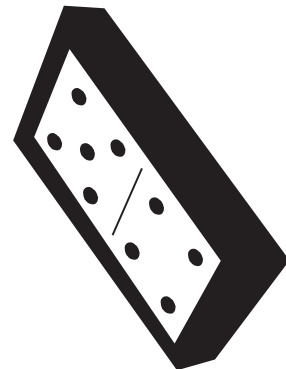
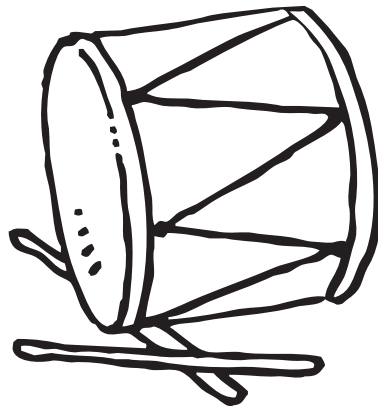
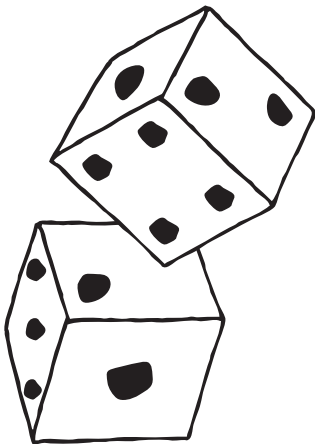
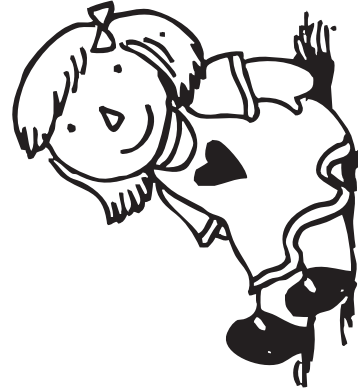
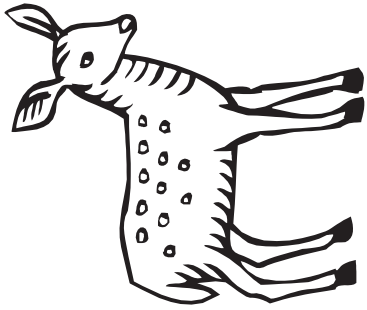
initial sound picture cards: crayon, coat, dog, door, duck, dragon



# Phonological Awareness

Pack - A - Backpack

PA. 028



initial sound picture cards: deer, donut, doll, dice, drum, domino

