



Objective

The student will blend onsets and rimes to make words.

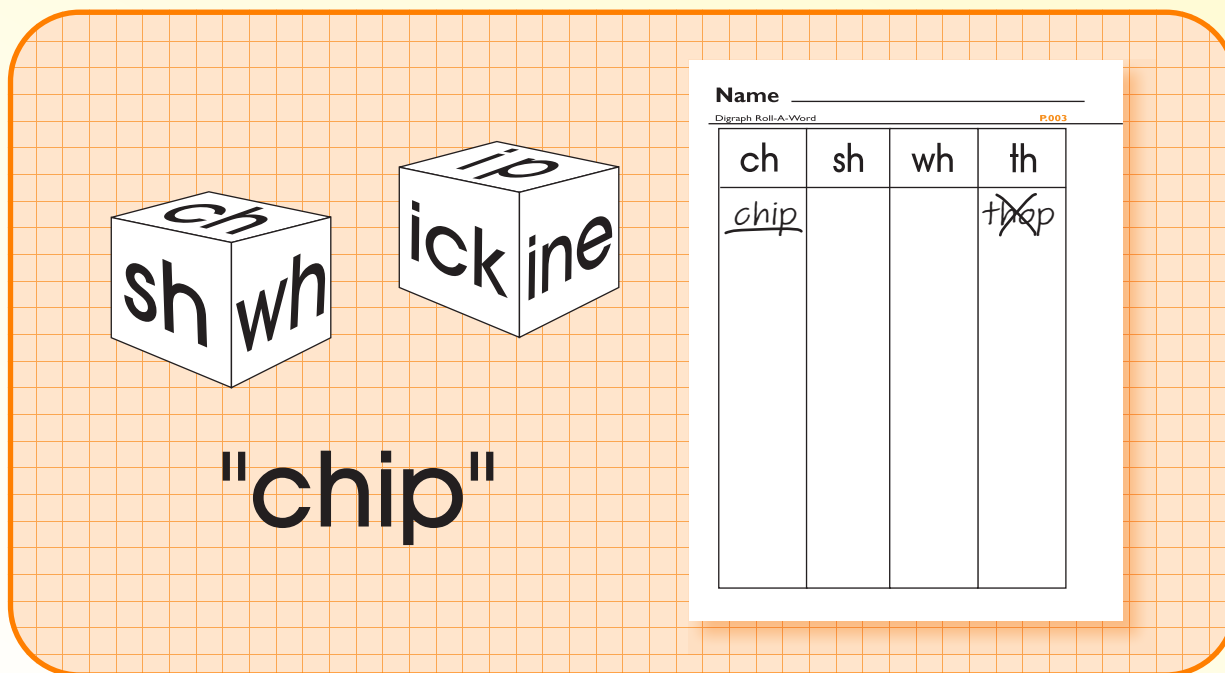
Materials

- ▶ Onset cube
Labeled with the digraphs: ch, sh, th, wh, th, ch.
- ▶ Rime cube
Labeled with the rimes: at, op, in, ip, ine, ick.
- ▶ Student sheet
- ▶ Pencils

Activity

Students make words using digraph onset and rime letter cubes.

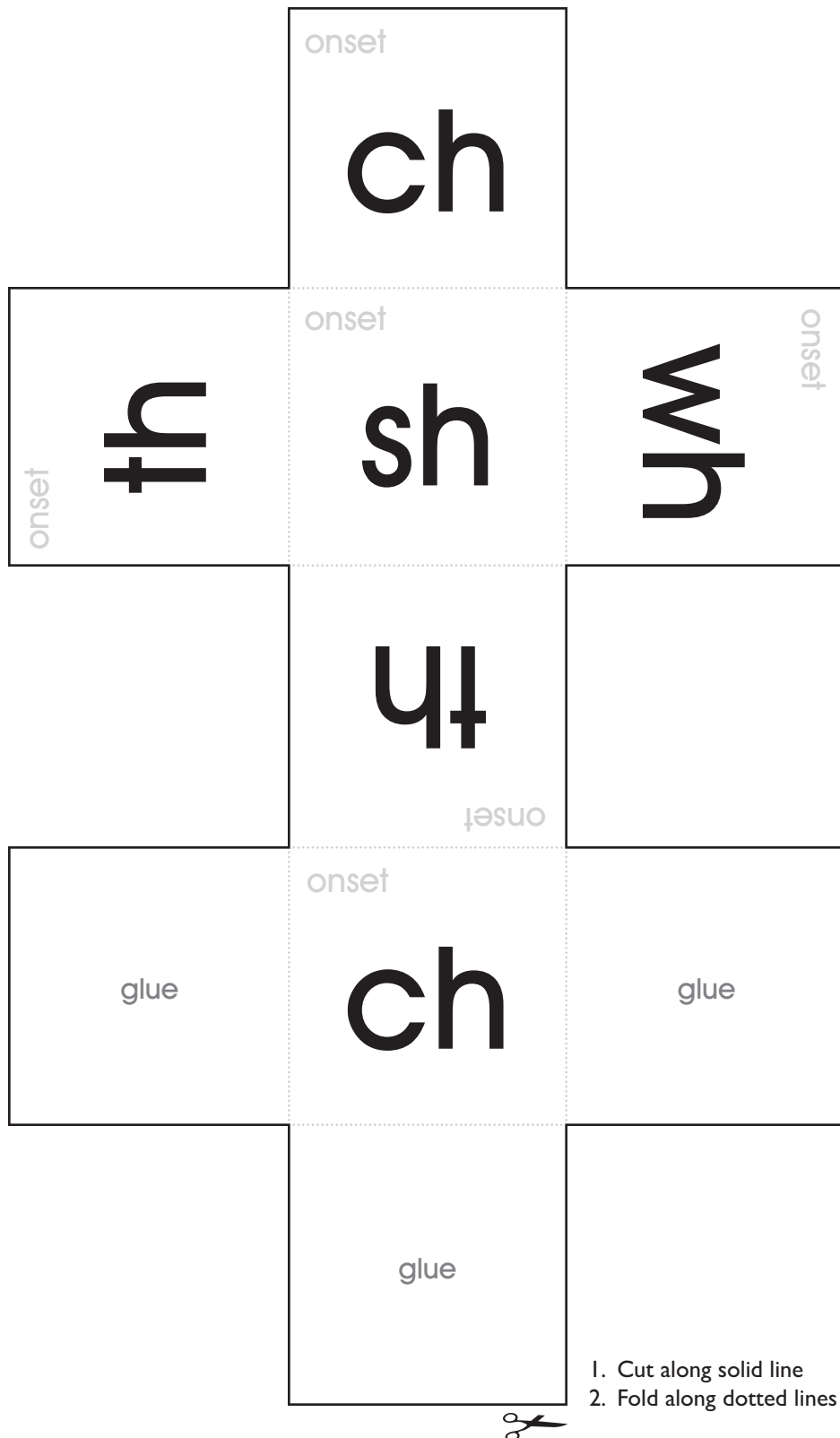
1. Place the cubes on a flat surface. Provide each student with a student sheet.
2. Taking turns, students roll each cube. Arrange cubes so the onset (digraph) cube is placed to the left of the rime cube.
3. Blend the onset and rime, and say the word (e.g., /ch/ /ip/, “chip”).
4. Write the word (nonsense or real) under the appropriate onset column. Underline the real words and put an “X” through the nonsense words.
5. Continue the activity until all possible words are made.
6. Point to and read the real words in each column.
7. Teacher evaluation



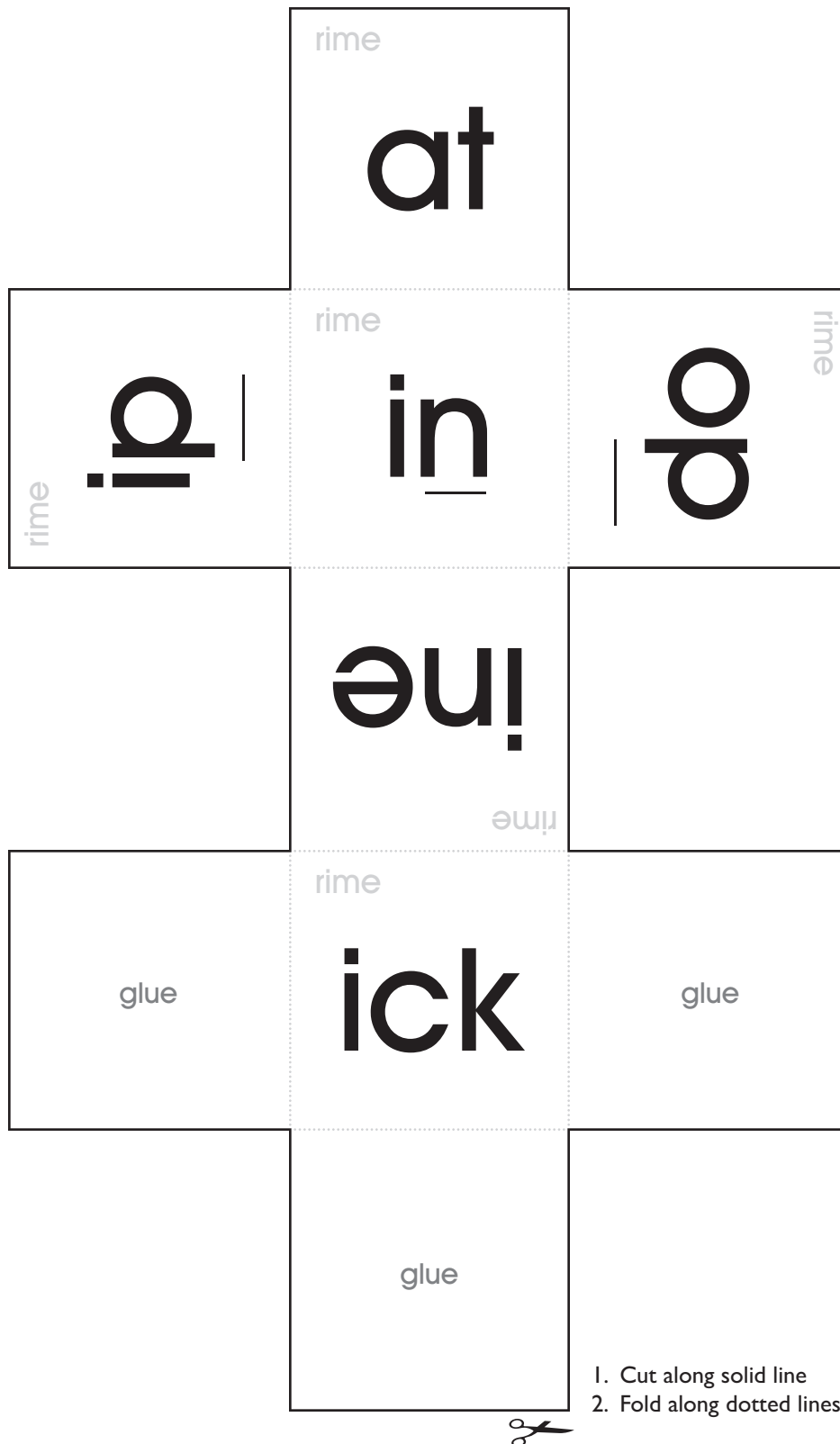
Name _____			
Digraph Roll-A-Word P.003			
ch	sh	wh	th
<u>chip</u>			thip

Extensions and Adaptations

- ▶ Make other cubes with blends to make words.



1. Cut along solid line
2. Fold along dotted lines

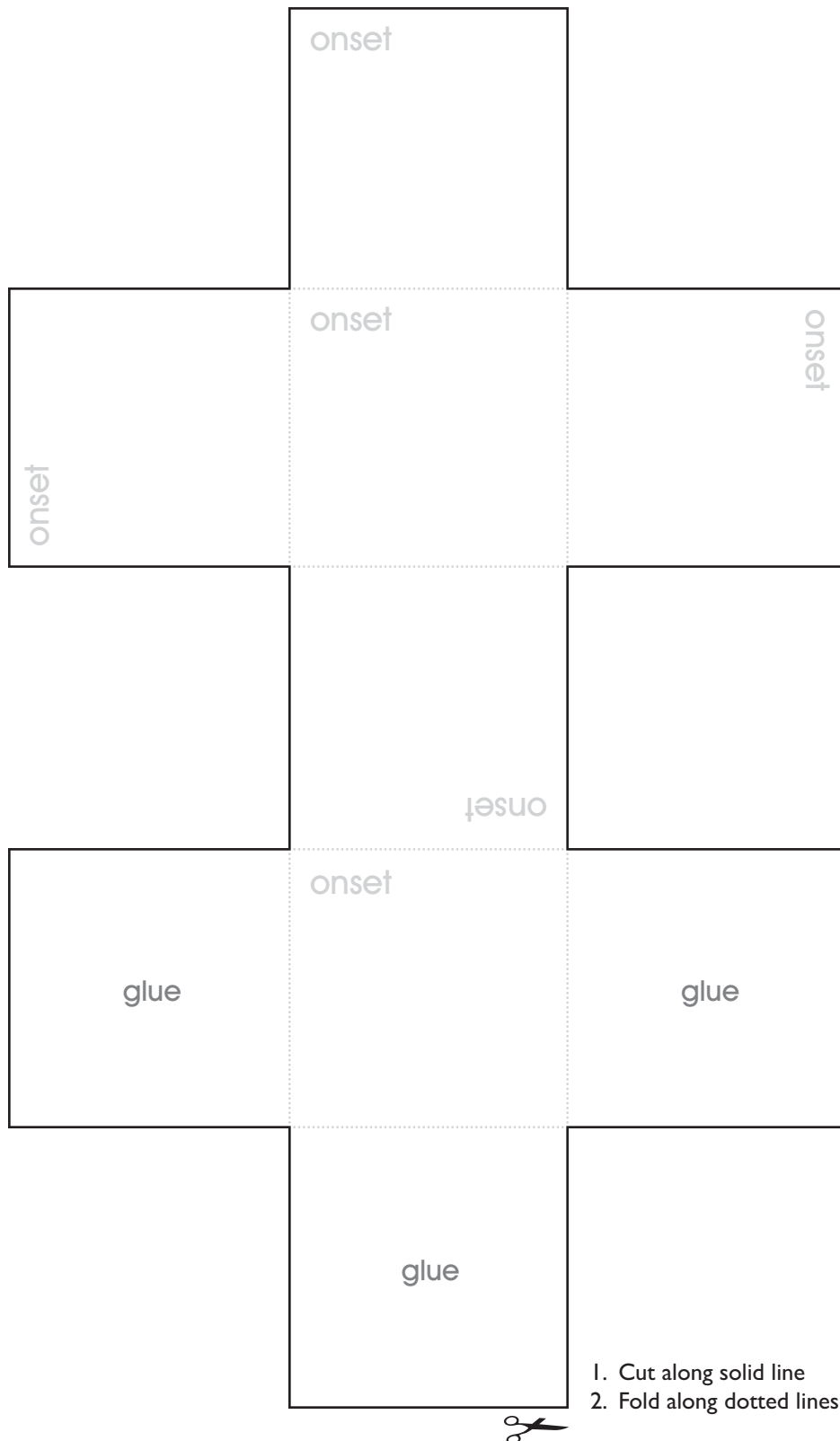


Name _____

Digraph Roll-A-Word

P. 003

ch	sh	wh	th



blank onset cube

